

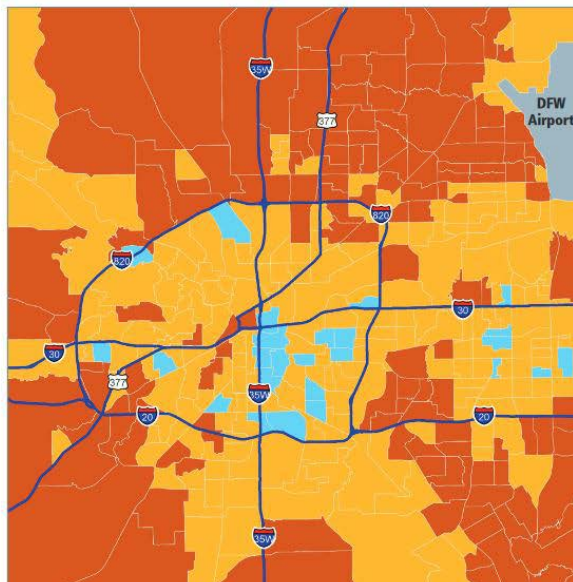
PowerPoint Slides

Trends in Poverty and Income in Fort Worth, Tarrant County, Texas and the U.S.:

Indicator	Fort Worth	Tarrant County	Texas	United States
Working Families that are low income ¹	33.8%	-	37%	28%
Families earning less than \$22K ²	15.2%	11.9%	13.7%	11.5%
Families with Women as head of household earning less than \$22K ¹	33.5%	30.3%	36.1%	30.9%
Children living in households earning less than \$22K ²	26.5%	22.1%	25.3%	21.9%
Median Household Income ²	\$52,492	\$57,727	\$52,576	\$53,482
Per capita income ²	\$24,726	\$28,541	\$26,513	\$28,555

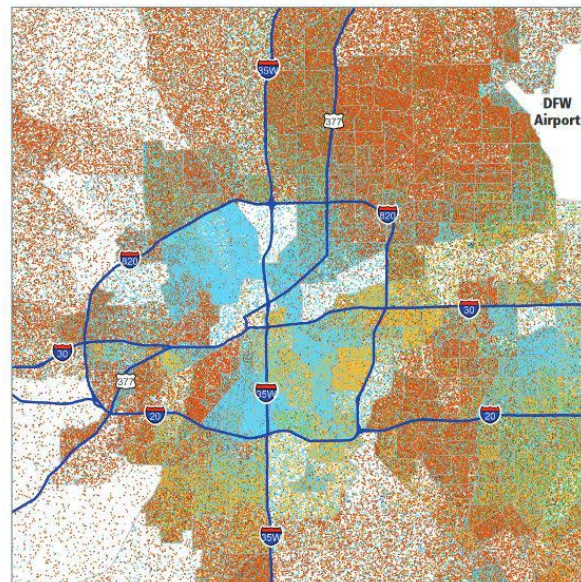
Sources: (1) *The Working Poor Families Project, Working Hard Falling Short*
 (2) 2010-2014 ACS 5-year, *Poverty Status in The Past 12 Months of Families, S1702.*

Fort Worth has areas of racial, ethnic and income diversity, but children of color are more likely to live in the highest-poverty areas.¹³



Tarrant County Total Poverty Rate by Census Tract, 2010-2014

■ No Data
■ Lower-Poverty
■ Moderate-to-High Poverty
■ Highest-Poverty



Tarrant County Child Population by Race/Ethnicity Census Tracts, 2010 (dot = 1 child)

■ Hispanic
■ White
■ Black
■ Asian/Pacific Islander
■ Multirace & Other Race/Ethnicity

Source: *State of Texas Children 2016: Race and Equity in Fort Worth.*